

Horn in F

Ju te vuex

Erik Satie
Arr for Orchestra

♩ = 180

Intro.

1st

mf

2. 3. 4.

a2

The Intro section consists of five measures. The first measure has a whole note G4 in the treble and a whole note F3 in the bass. The second measure has a whole note A4 in the treble and a whole note G3 in the bass. The third measure has a whole note B4 in the treble and a whole note A3 in the bass. The fourth measure has a whole note C5 in the treble and a whole note B3 in the bass. The fifth measure has a whole note D5 in the treble and a whole note C4 in the bass. The first measure is marked with a first ending bracket. The second measure is marked with a first ending bracket. The third measure is marked with a first ending bracket. The fourth measure is marked with a first ending bracket. The fifth measure is marked with a first ending bracket.

A

Section A consists of five measures, each containing a whole note chord. The chords are G4-A4-B4, A4-B4-C5, B4-C5-D5, C5-D5-E5, and D5-E5-F5. The first measure is marked with a first ending bracket. The second measure is marked with a first ending bracket. The third measure is marked with a first ending bracket. The fourth measure is marked with a first ending bracket. The fifth measure is marked with a first ending bracket.

11

Measures 11-15. Measure 11: G4-A4-B4. Measure 12: A4-B4-C5. Measure 13: B4-C5-D5. Measure 14: C5-D5-E5. Measure 15: D5-E5-F5. The first measure is marked with a first ending bracket. The second measure is marked with a first ending bracket. The third measure is marked with a first ending bracket. The fourth measure is marked with a first ending bracket. The fifth measure is marked with a first ending bracket.

16

Measures 16-21. Measure 16: G4-A4-B4. Measure 17: A4-B4-C5. Measure 18: B4-C5-D5. Measure 19: C5-D5-E5. Measure 20: D5-E5-F5. Measure 21: G4-A4-B4. The first measure is marked with a first ending bracket. The second measure is marked with a first ending bracket. The third measure is marked with a first ending bracket. The fourth measure is marked with a first ending bracket. The fifth measure is marked with a first ending bracket. The sixth measure is marked with a first ending bracket.

22

Measures 22-26. Measure 22: G4-A4-B4. Measure 23: A4-B4-C5. Measure 24: B4-C5-D5. Measure 25: C5-D5-E5. Measure 26: D5-E5-F5. The first measure is marked with a first ending bracket. The second measure is marked with a first ending bracket. The third measure is marked with a first ending bracket. The fourth measure is marked with a first ending bracket. The fifth measure is marked with a first ending bracket.

27

Measures 27-31. Measure 27: G4-A4-B4. Measure 28: A4-B4-C5. Measure 29: B4-C5-D5. Measure 30: C5-D5-E5. Measure 31: D5-E5-F5. The first measure is marked with a first ending bracket. The second measure is marked with a first ending bracket. The third measure is marked with a first ending bracket. The fourth measure is marked with a first ending bracket. The fifth measure is marked with a first ending bracket.

Ju te vuex

32

B

43

48

54

59

64

Ju te vuex

C

69

74

79

84

89

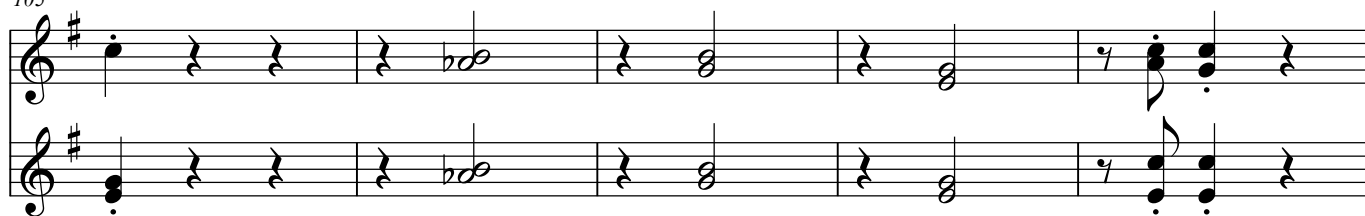
94

D

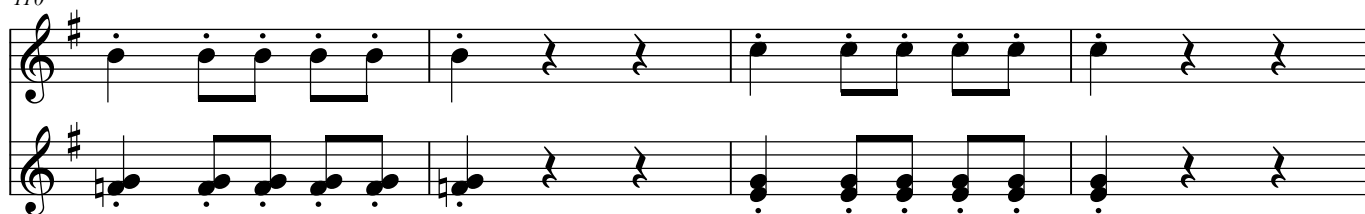
100

Ju te vuex

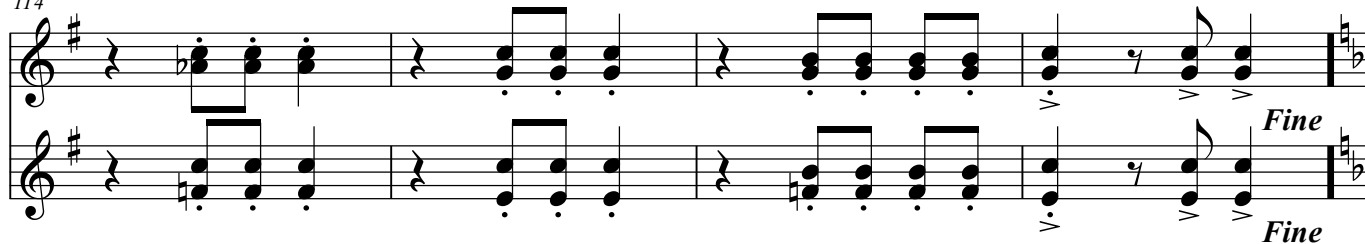
105



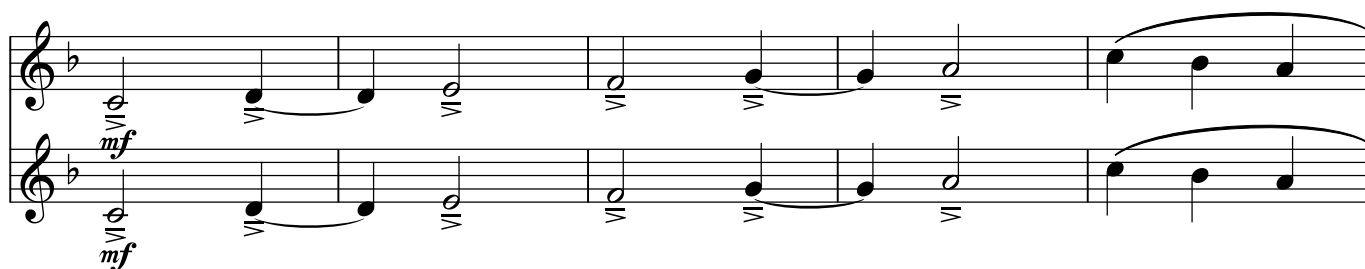
110



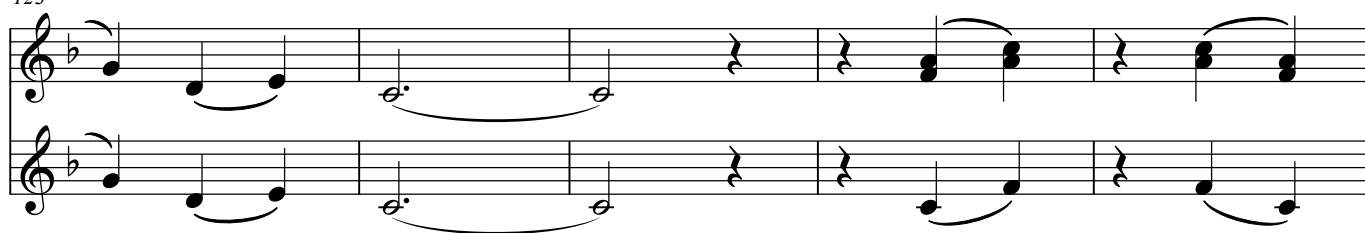
114



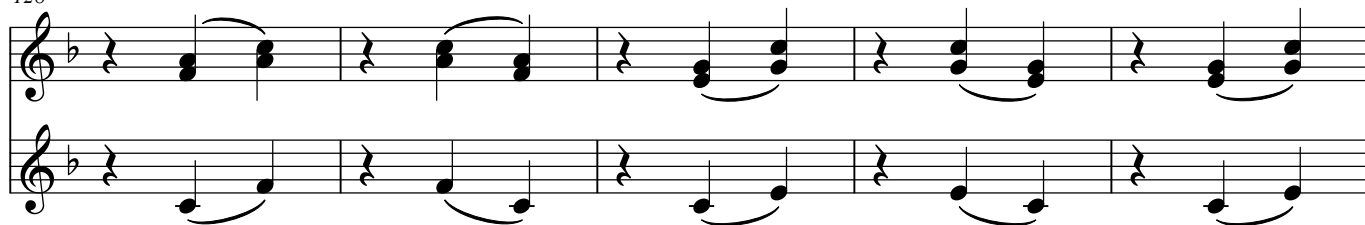
E



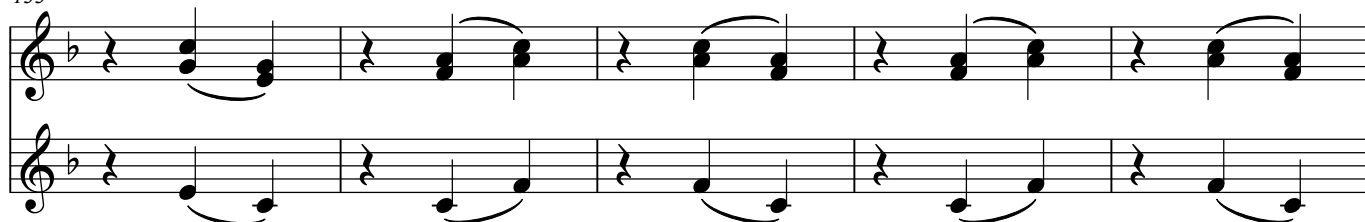
123



128

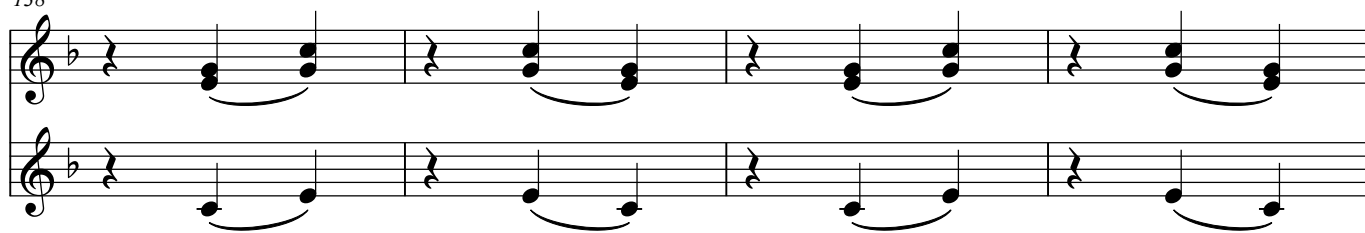


133

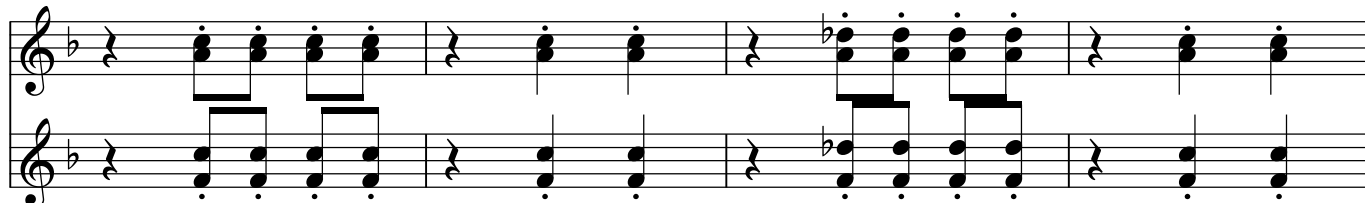


Ju te vuex

138



142



146

